



# MOULDED SLAT SCREEN

*The Screen that Lasts!*

## SUPERIOR STYLE & DURABILITY



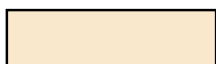
- 15 year structural warranty
- Will not rot, crack, split or need painting
- One-piece UV-stabilised polypropylene panel
- Easy installation using Matrix H-clips or galvanised & powder coated steel C-channel frame kit

### COLOUR CHOICE

Colour names in brackets are those of the equivalent Colorbond® steel roofing/fencing colours.



Off White  
(Surfmist®)



Smooth Cream  
(Classic Cream®)



Merino  
(Paperbark®)



Mist Green  
(Pale Eucalypt®)



Mountain Blue  
(Deep Ocean®)



Slate Grey  
(Woodland Grey®)

Colorbond® and ® colour names are registered trademarks of BlueScope Steel Limited.

**Note:** The colour chart above may not exactly match the actual colour of the product and should be used as a guide only.

[www.designflow.com.au](http://www.designflow.com.au)



## MOULDED SLAT SCREEN

*The Screen that Lasts!*

### MOULDED SLAT SCREEN

Matrix Moulded Slat Screen is the smart, durable and maintenance free alternative to timber slat screens. One piece panel 2410x1205mm is the same on both sides and is moulded from UV-stabilised polypropylene resin for strength and durability.

It is perfect for adding privacy and shade, does not contain harmful chemicals and is resistant to mould and insects.

### INSTALLATION OPTIONS

A Matrix Moulded Slat Screen can be installed professionally and securely using the strong galvanised and powder coated steel Matrix C-channel frame kit (sold separately), which will measure 2425x1220x28mm when assembled. Instructions for installation using the C-channel kit are included in the kit or can be downloaded from our web site [www.designflow.com.au](http://www.designflow.com.au).

Alternatively, a Matrix Moulded Slat Screen can be attached to a wall, fence or horizontal rails using the Matrix H-clips (sold separately in packs of 13). The instructions below cover installation using Matrix H-clips.

**CAUTION:** All plastic products will expand and contract with changes in temperature. If no allowance is made for thermal expansion and contraction during installation, this will void the warranty.

These figures show approximate panel size variation due to temperature changes: At 0°C=1202x2404mm, at 20°C=1205x2410mm, at 40°C=1213x2416mm.

Note: Installation in horizontal (ceiling) position without providing support approximately every 250mm to 300mm is not recommended and any resulting distortion will not be covered by the warranty.

### INSTALLATION STEPS

**IMPORTANT NOTE:** Each H-Clip must be at the top of the opening in the screen and against the same side of each vertical rib (Fig. 2).

1. Place the first two H-Clips against the ribs in the middle of the screen near the top (Fig. 3).
2. Either support the screen panel on blocks, or use clamps or get a helper to hold the screen level in its intended position against the supporting structure.
3. Attach each of the first two H-Clips to the existing structure behind the screen with an appropriate screw (see Fig. 4) through the hole in the H-Clip.
4. Check that the screen is level and then attach with H-Clips in the rest of the locations.
5. When all H-Clips are attached, try sliding the screen upwards and sideways. The screen should be able to move about 10mm sideways and upwards with little effort, which will enable the screen to expand and contract freely.
6. If there is too much resistance or the screen will not move, reposition incorrectly fitted H-Clip(s) until the screen is free to move. Warranty may be voided by incorrect installation.
7. To prevent the screen panel moving excessively, install an additional H-Clip on the opposite side of a rib. Allow a 10mm gap for expansion and contraction as per Fig. 5.

It is the policy of Design Flow Pty Ltd to use the highest possible proportion of suitable recycled materials in the production of Matrix Moulded Slat Screens.



H-Clip

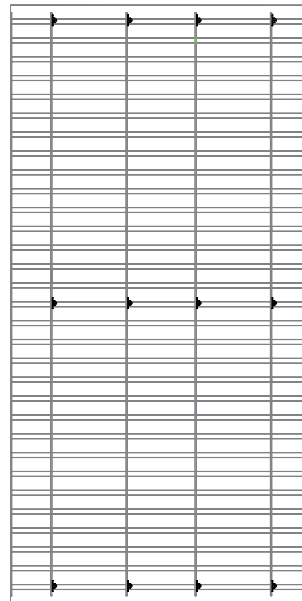


Fig. 1



Fig. 2



Fig. 3

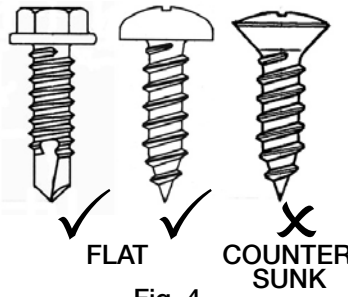


Fig. 4



Fig. 5

### SPECIFICATIONS

|                    |  |
|--------------------|--|
| <b>Material:</b>   | Solid UV-stabilised PolyPropylene (PP) Resin       |
| <b>Dimensions:</b> | 1205±5mm Wide x 2410±5mm High (75% Blockout)       |
| <b>Slats:</b>      | 5.0±0.5mm Thick x 56±0.5mm Wide with 20±0.5mm gaps |
| <b>Ribs:</b>       | 24±0.5mm Deep x 6±0.5mm Thick                      |
| <b>Weight:</b>     | 9kg (approx)                                       |

Design Flow Pty Ltd

4 Tova Drive, Carrum Downs Vic 3201 Australia

Tel: 1300 361 771 Email: [sales@designflow.com.au](mailto:sales@designflow.com.au)

Fax: 03 9775 0964 Web: [www.designflow.com.au](http://www.designflow.com.au)

In an ongoing commitment to product innovation Design Flow reserves the right to change specifications without notice.

INNOVATION IN PLASTIC  
**DesignFlow**<sup>®</sup>