

FENCE EXTENSIONS

Fence Extensions that Last!



Add long lasting style, privacy and security to your boundary fence with Matrix Fence Extensions.

- Never needs painting
- Will not rot, mildew or separate
- Does not contain harmful chemicals
- 15 year structural warranty
- Easy to assemble and install
- One-piece UV-stabilised polypropylene panel
- Powder coated galvanised steel frame
- 75% block-out / shade

COLOUR CHOICE

Colour names in brackets are those of the equivalent Colorbond® steel colours.



Colorbond® and ® colour names are registered trademarks of BlueScope Steel Limited.

Note: The colour chart above may not exactly match the actual colour of the product and should be used as a guide only.

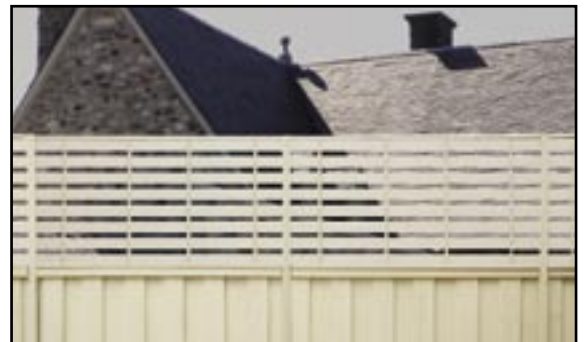
Kit 1-1100 with lattice

Dimensions: 2420mm long x 620mm high, 1150mm legs
Available in all 10 colours



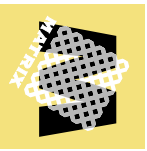
Kit 1-1112 with horizontal slats

Dimensions: 1220mm long x 620mm high, 550mm legs
Available in the 6 colours marked with a #



Kit 1-1124 with vertical slats

Dimensions: 2420mm long x 620mm high, 1150mm legs
Available in the 6 colours marked with a #



FENCE EXTENSIONS

Fence Extensions that Last!

INSTALLATION INSTRUCTIONS

Important note

Before you begin installing Matrix Fence Extensions, ensure that the fence is stable, solid and able to support the additional wind load. If any fence rails or pallings are loose, secure them first.

Tips

- If fitting Matrix Fence Extensions to the frame side of the fence, select a starting point and mark out where each upright will be secured to the fence rails to ensure that there is no interference with the fence posts (each Matrix Fence Extension is 2420mm long as shown in Fig 1a). Shift the starting point or shorten one of the Fence Extensions if there is interference with a fence post.
- If the fence has varying contours, step the Matrix Fence Extensions as illustrated in Fig 1b.
- If the top of the fence has a constant slope, instead of stepping Matrix Fence Extensions you can install them on an angle as shown in Fig 1c.

Tools and hardware required

- | | | |
|---------------------------|--------------|----------------------------|
| Spirit Level | Tape measure | Power drill and drill bits |
| Step ladder | String line | Hammer |
| Phillips head screwdriver | 2 Clamps | |
- Hacksaw and wood saw (only if cutting down in length)
At least 4 large screws or bolts per fence extension for attaching to the fence - long enough to go into fence rail.

Assembly

1. Lay the Matrix fence extension on a clean flat surface. Insert a plastic moulded corner into each end of the TOP C-Channel as per Fig. 4 and tap in gently. Take care not to damage the corners.
2. Insert a plastic bracket into each end of the BOTTOM C-channel and tap into place gently as shown in Fig. 5. Take care not to damage the brackets.
3. Insert the upright so that it slots into the plastic bracket as shown in Fig. 6a & b. Slide the upright over the edge of the lattice up to the moulded corner in the top C-Channel as shown in Fig. 4, then gently tap it onto the moulded corner. Repeat step 3 for the other end of the fence extension.

Installation

4. Attach each fence extension to the fence using 2 large screws or bolts per upright as shown in Fig. 1a, 1b, or 1c. Measure from the top of the fence to middle of the first and second fence rails, then mark and drill the holes in each upright. The holes need to be large enough for the screws or bolts to fit through easily.
5. If you need to shorten any of the fence extensions, cut the top and bottom C-Channels with a metal hacksaw, then CUT THE SAME LENGTH OFF THE LATTICE with a wood saw.
6. If the tops of the fence extensions do not line up due to unevenness of the fence, secure adjoining uprights together 85mm from the top of the fence extension using the supplied flat bracket as shown in Fig. 3, ensuring that the screws do not interfere with the lattice.
7. If attaching to a steel fence, cut Fence Extensions to length so that the uprights can be inserted into the fence posts from above or attached to the face of the fence posts.

It is the policy of Design Flow Pty Ltd to use the highest possible proportion of suitable recycled materials in the production of Matrix Lattice.

MATRIX LATTICE™ IS A TRADEMARK OF DESIGN FLOW PTY LTD

4 Tova Drive, Carrum Downs Vic 3201 Australia
Tel: 1300 361 771 Email: sales@designflow.com.au
Fax: 03 9775 0964 Web: www.designflow.com.au



In an ongoing commitment to product innovation DesignFlow reserves the right to change specifications without notice.

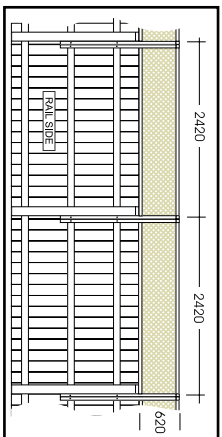


Fig 1a

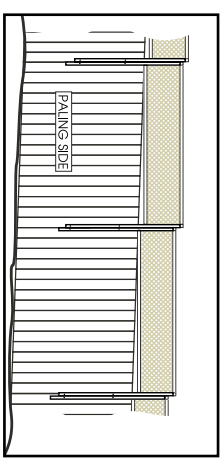


Fig 1b

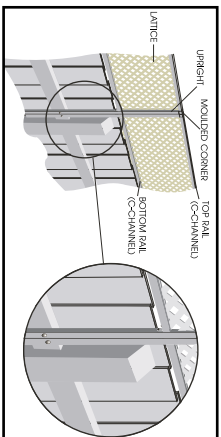


Fig 2

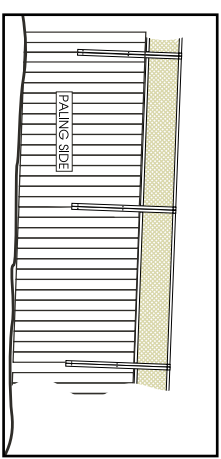


Fig 1c

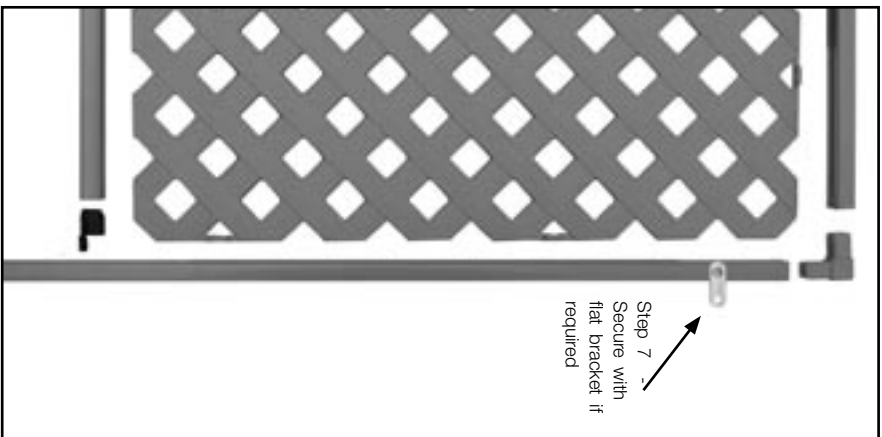


Fig 3

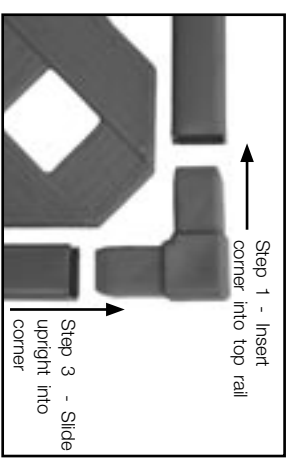


Fig 4

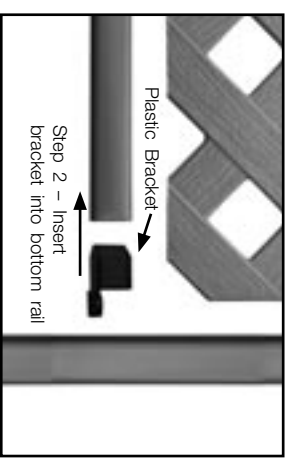


Fig 5



Fig 6a



Fig 6b