

Easy Fit Diamond Clips for Installing Matrix Lattice

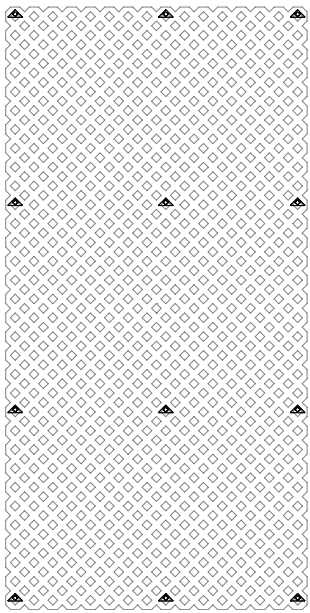


Fig. 1

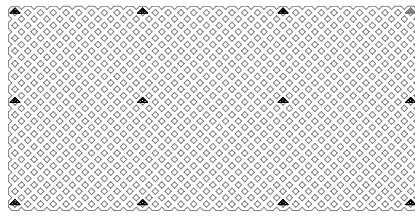


Fig. 2

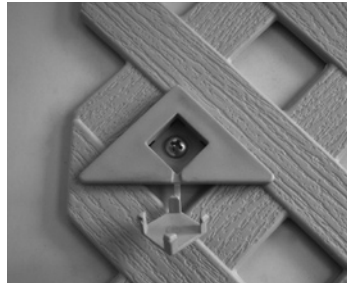


Fig. 4

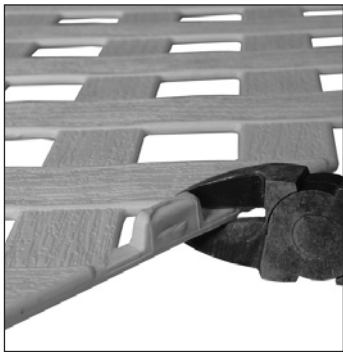


Fig. 3

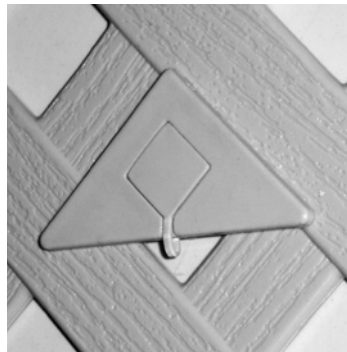


Fig. 5



Diamond Clips can be used on their own or in conjunction with Matrix C-channel Frames and will hold the lattice securely in place against any existing structure (e.g. posts or rails, a fence or a building) while allowing it to expand and contract with changes in temperature.

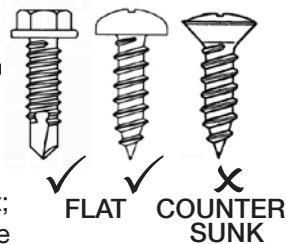
PREPARATION

The number of Diamond Clips needed to install the lattice depends on the size and shape of the sheet and the shape of the structure to which you are attaching the lattice. A standard vertical installation of a full sheet 2410x1205mm requires one pack of 12 Diamond Clips fitted in 4 rows of 3 clips (Fig. 1). If installing the lattice horizontally, fit the 12 Diamond Clips in 3 rows of 4 (Fig. 2). Make sure that the supporting structure is flat, solid and able to support the additional load.

You will need to purchase separately sufficient quantity of screws appropriate for the material to which you intend to attach the screen (e.g. self drilling screws for metal, or wood screws for timber, or masonry anchors for brick or concrete).

IMPORTANT NOTE: Screws must have a flat base under the head – do not use countersunk screws.

Before installing the lattice, ensure that it will have at least 12mm clearance all the way around the sheet; this provides room for expansion of the lattice (see Figs. 1 & 2). Trim the sheet with a wood saw or jig saw if necessary. We do not recommend using a circular saw due to the risk of cracking the lattice.



INSTALLATION STEPS

1. If desired, you can remove all the tabs that are moulded around the perimeter of the lattice with a wood saw or cutting pliers to improve its appearance; cut close to the edge of the lattice to prevent a sharp burr (Fig. 3).
2. Get a helper to hold the lattice in its intended position against the supporting structure or support it on blocks, then place the first Diamond Clip within the lattice opening in the middle of the sheet near the top (Figs. 1 & 2).
3. Attach the Diamond Clip to the existing structure behind the lattice with an appropriate screw through the hole in the Diamond Clip.
4. Check that the lattice is level and then repeat for all the remaining locations.

IMPORTANT NOTE: All Diamond Clips must be at the top of the diamond shaped openings in the lattice with the screw cover directly below the screw hole (Fig. 4).

5. When all Diamond Clips are attached, try sliding the lattice upwards. The lattice should be able to move up about 10mm with little effort, which will enable the lattice to expand and contract freely.
6. If there is too much resistance or the lattice will not move, slightly release the screws or reposition incorrectly fitted Diamond Clips until the lattice is free to move.
7. Push the screw covers into place on the Diamond Clips to hide the screws (Fig. 5).